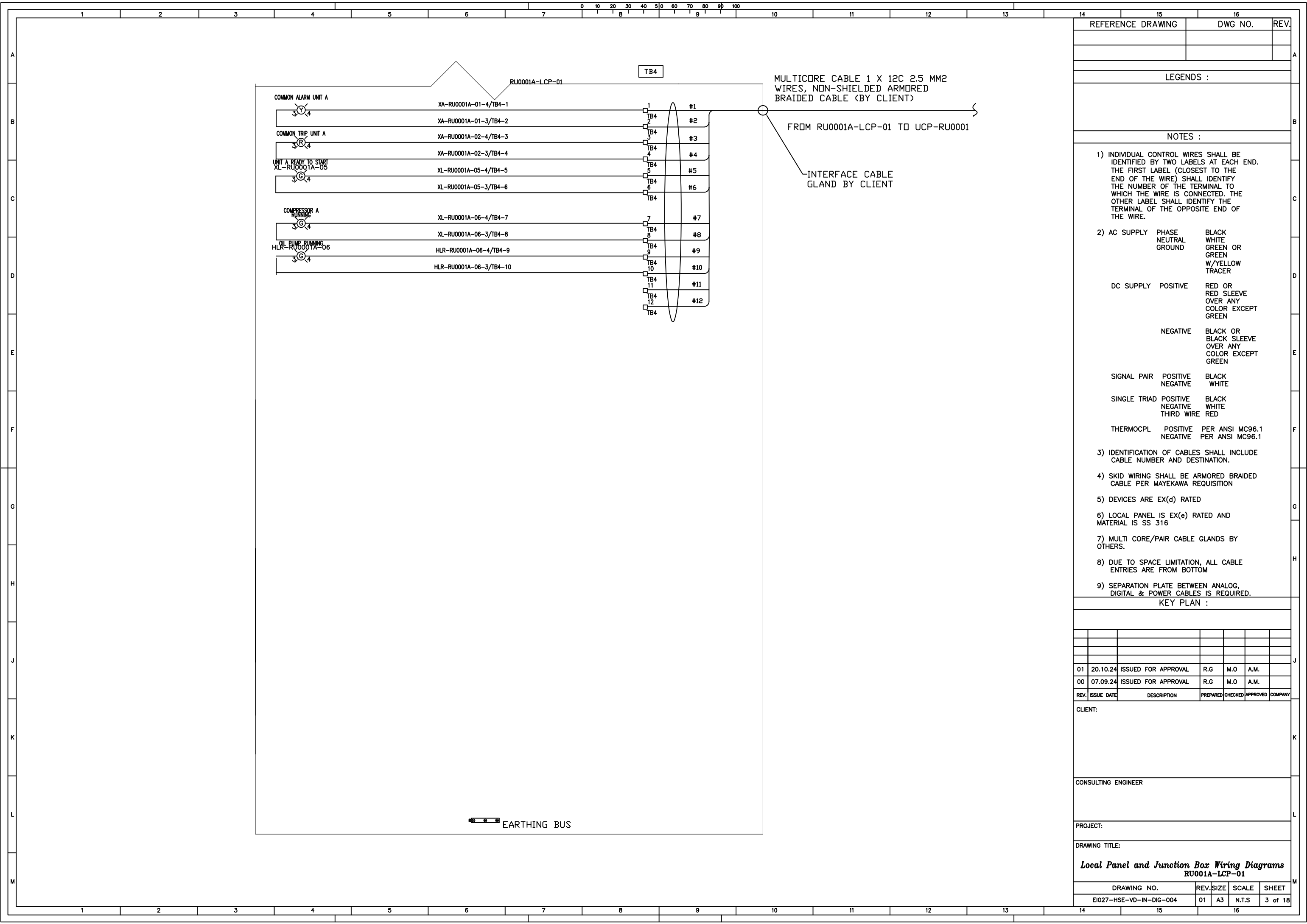
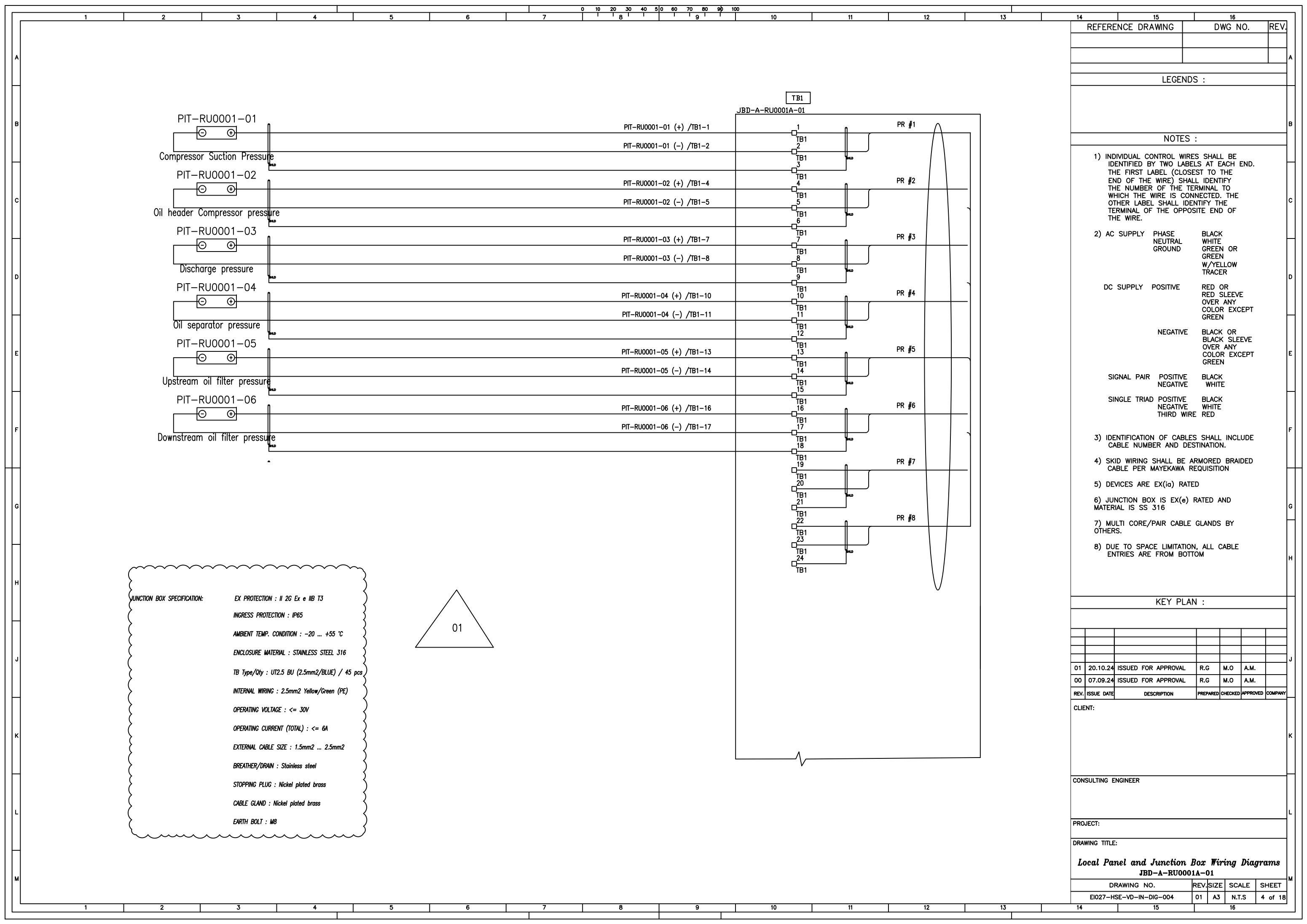


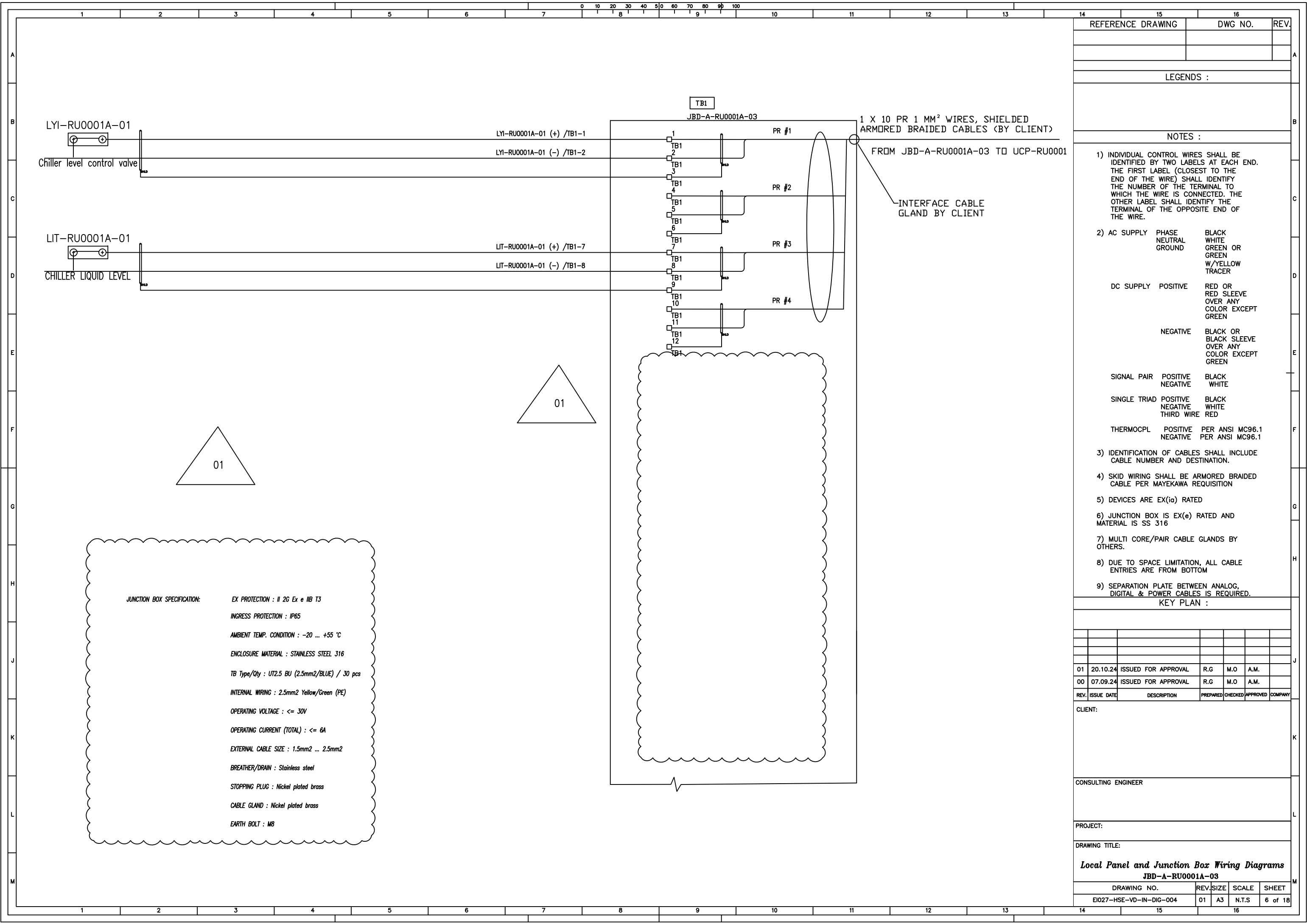
REFERENCE DRAWING				DWG NO.		REV.
LEGENDS :						
NOTES :						
1) INDIVIDUAL CONTROL WIRES SHALL BE IDENTIFIED BY TWO LABELS AT EACH END. THE FIRST LABEL (CLOSEST TO THE END OF THE WIRE) SHALL IDENTIFY THE NUMBER OF THE TERMINAL TO WHICH THE WIRE IS CONNECTED. THE OTHER LABEL SHALL IDENTIFY THE TERMINAL OF THE OPPOSITE END OF THE WIRE.						
2) AC SUPPLY		PHASE NEUTRAL GROUND	BLACK WHITE GREEN OR GREEN W/YELLOW TRACER			
DC SUPPLY		POSITIVE	RED OR RED SLEEVE OVER ANY COLOR EXCEPT GREEN			
		NEGATIVE	BLACK OR BLACK SLEEVE OVER ANY COLOR EXCEPT GREEN			
SIGNAL PAIR		POSITIVE NEGATIVE	BLACK WHITE			
SINGLE TRIAD		POSITIVE NEGATIVE THIRD WIRE	BLACK WHITE RED			
THERMOCPL		POSITIVE NEGATIVE	PER ANSI MC96.1 PER ANSI MC96.1			
3) IDENTIFICATION OF CABLES SHALL INCLUDE CABLE NUMBER AND DESTINATION.						
4) SKID WIRING SHALL BE ARMORED BRAIDED CABLE PER MAYEKAWA REQUISITION						
5) DEVICES ARE EX(d) RATED						
6) LOCAL PANEL IS EX(e) RATED AND MATERIAL IS SS 316						
7) MULTI CORE/PAIR CABLE GLANDS BY OTHERS.						
8) DUE TO SPACE LIMITATION, ALL CABLE ENTRIES ARE FROM BOTTOM						
9) SEPARATION PLATE BETWEEN ANALOG, DIGITAL & POWER CABLES IS REQUIRED.						
KEY PLAN :						
01	20.10.24	ISSUED FOR APPROVAL	R.G	M.O	A.M.	
00	07.09.24	ISSUED FOR APPROVAL	R.G	M.O	A.M.	
REV.	ISSUE DATE	DESCRIPTION	PREPARED	CHECKED	APPROVED	COMPANY
CLIENT:						
CONSULTING ENGINEER						
PROJECT:						
DRAWING TITLE:						
Local Panel and Junction Box Wiring Diagrams RU001A-LCP-01						
DRAWING NO.			REV.	SIZE	SCALE	SHEET
EI027-HSE-VD-IN-DIG-004			01	A3	N.T.S	1 of 18



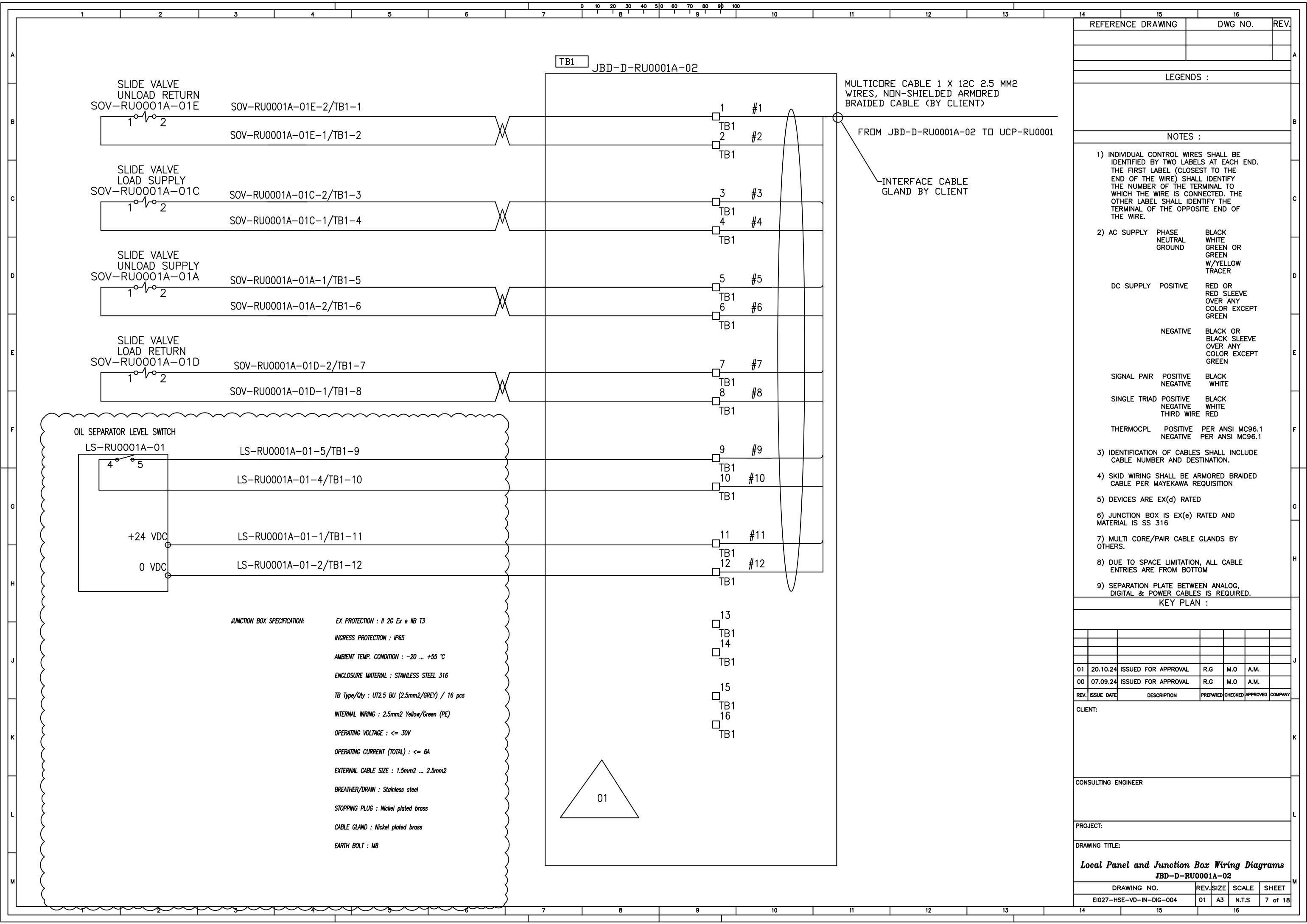
REFERENCE DRAWING			DWG NO.		REV.
LEGENDS :					
NOTES :					
1) INDIVIDUAL CONTROL WIRES SHALL BE IDENTIFIED BY TWO LABELS AT EACH END. THE FIRST LABEL (CLOSEST TO THE END OF THE WIRE) SHALL IDENTIFY THE NUMBER OF THE TERMINAL TO WHICH THE WIRE IS CONNECTED. THE OTHER LABEL SHALL IDENTIFY THE TERMINAL OF THE OPPOSITE END OF THE WIRE.					
2) AC SUPPLY		PHASE NEUTRAL GROUND	BLACK WHITE GREEN OR GREEN W/YELLOW TRACER		
DC SUPPLY		POSITIVE	RED OR RED SLEEVE OVER ANY COLOR EXCEPT GREEN		
		NEGATIVE	BLACK OR BLACK SLEEVE OVER ANY COLOR EXCEPT GREEN		
SIGNAL PAIR		POSITIVE NEGATIVE	BLACK WHITE		
SINGLE TRIAD		POSITIVE NEGATIVE THIRD WIRE	BLACK WHITE RED		
THERMOCPL		POSITIVE NEGATIVE	PER ANSI MC96.1 PER ANSI MC96.1		
3) IDENTIFICATION OF CABLES SHALL INCLUDE CABLE NUMBER AND DESTINATION.					
4) SKID WIRING SHALL BE ARMORED BRAIDED CABLE PER MAYEKAWA REQUISITION					
5) DEVICES ARE EX(d) RATED					
6) LOCAL PANEL IS EX(e) RATED AND MATERIAL IS SS 316					
7) MULTI CORE/PAIR CABLE GLANDS BY OTHERS.					
8) DUE TO SPACE LIMITATION, ALL CABLE ENTRIES ARE FROM BOTTOM					
9) SEPARATION PLATE BETWEEN ANALOG, DIGITAL & POWER CABLES IS REQUIRED.					
KEY PLAN :					
01	20.10.24	ISSUED FOR APPROVAL	R.G	M.O	A.M.
00	07.09.24	ISSUED FOR APPROVAL	R.G	M.O	A.M.
REV.	ISSUE DATE	DESCRIPTION	PREPARED	CHECKED	APPROVED COMPANY
CLIENT:					
CONSULTING ENGINEER					
PROJECT:					
DRAWING TITLE:					
Local Panel and Junction Box Wiring Diagrams RU001A-LCP-01					
DRAWING NO.			REV.	SIZE	SCALE
EI027-HSE-VD-IN-DIG-004			01	A3	N.T.S
					SHEET
					3 of 18

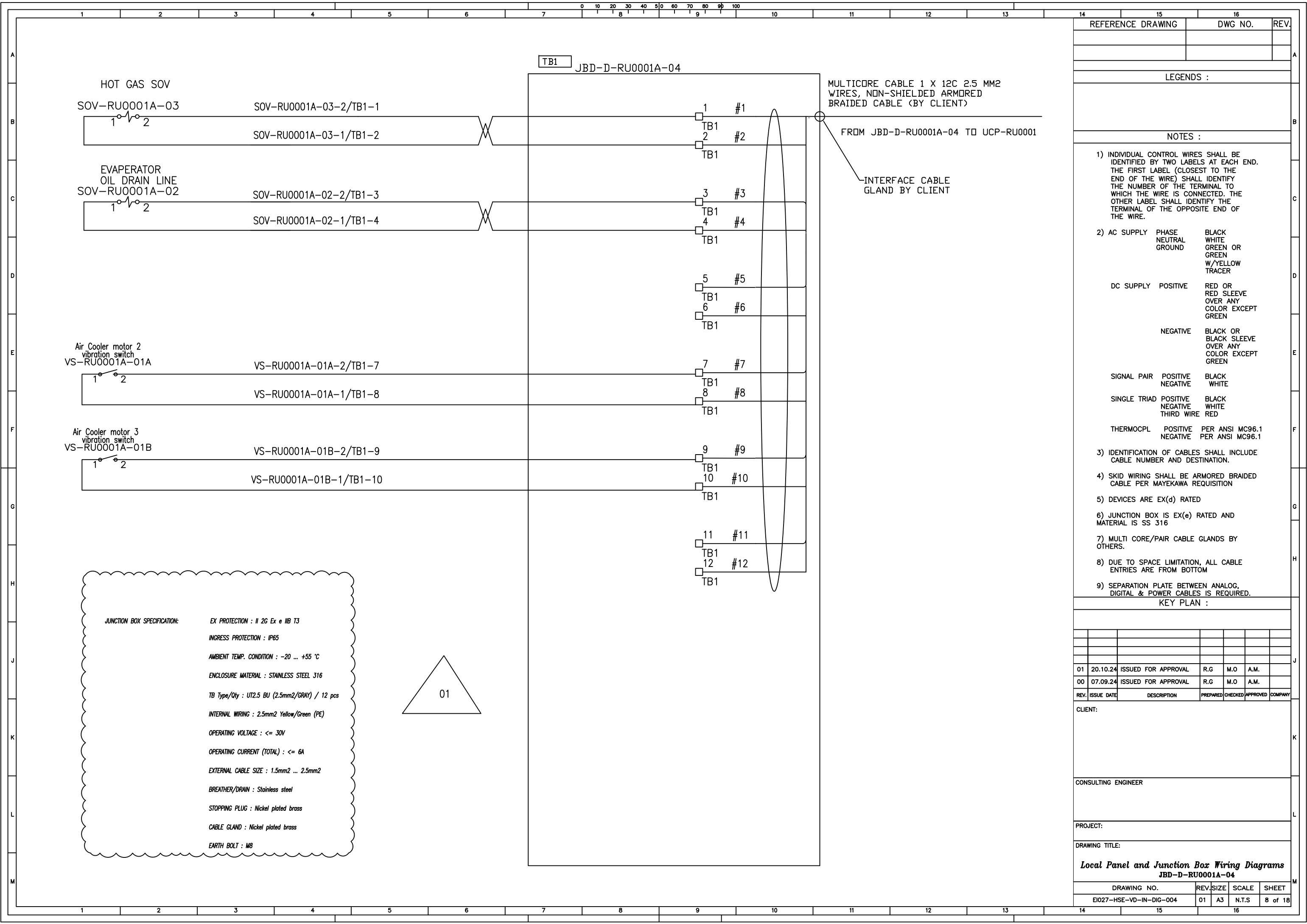


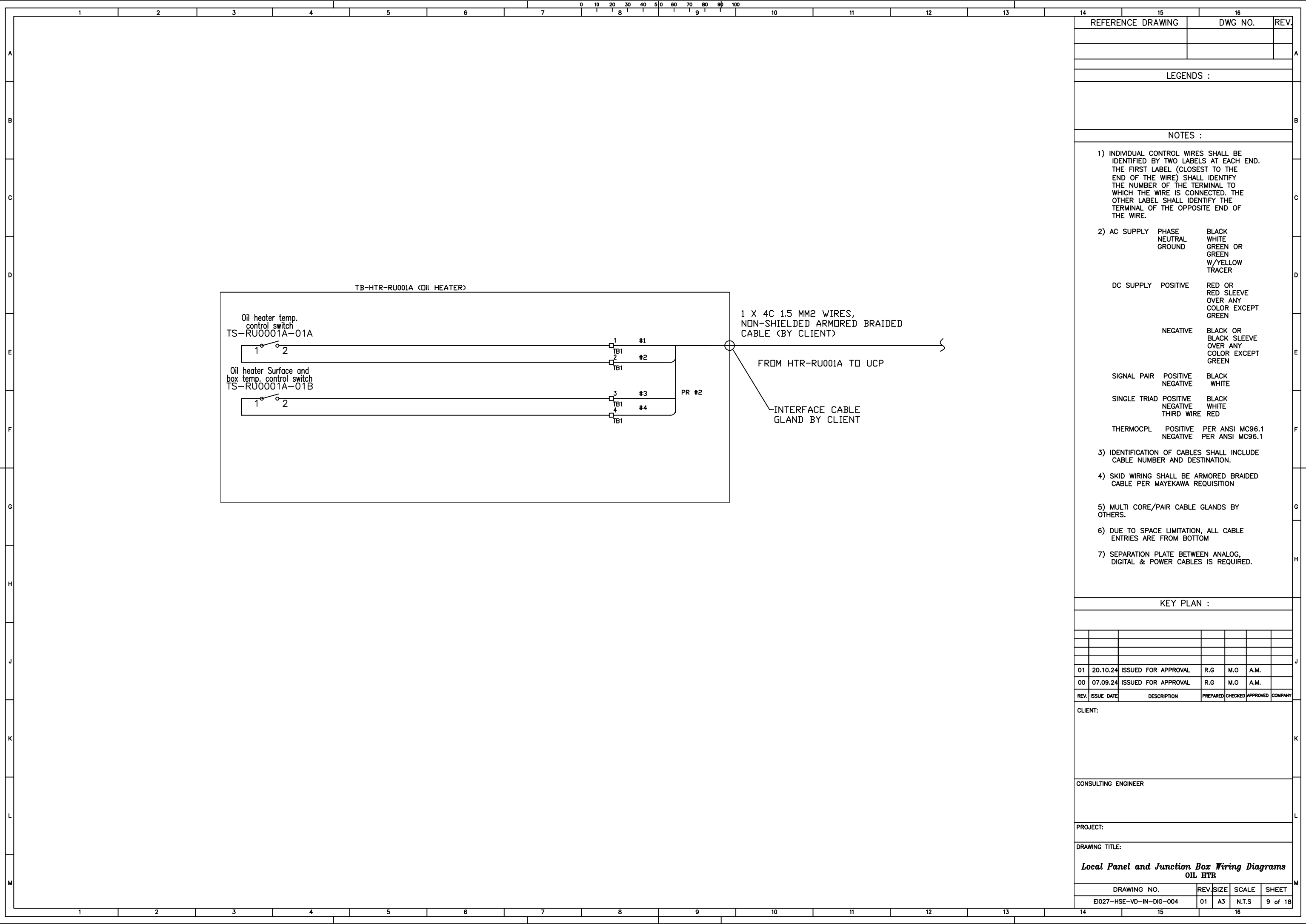
REFERENCE DRAWING			DWG NO.		REV.
LEGENDS :					
NOTES :					
1) INDIVIDUAL CONTROL WIRES SHALL BE IDENTIFIED BY TWO LABELS AT EACH END. THE FIRST LABEL (CLOSEST TO THE END OF THE WIRE) SHALL IDENTIFY THE NUMBER OF THE TERMINAL TO WHICH THE WIRE IS CONNECTED. THE OTHER LABEL SHALL IDENTIFY THE TERMINAL OF THE OPPOSITE END OF THE WIRE.					
2) AC SUPPLY		PHASE NEUTRAL GROUND	BLACK WHITE GREEN OR GREEN W/YELLOW TRACER		
DC SUPPLY		POSITIVE	RED OR RED SLEEVE OVER ANY COLOR EXCEPT GREEN		
		NEGATIVE	BLACK OR BLACK SLEEVE OVER ANY COLOR EXCEPT GREEN		
SIGNAL PAIR		POSITIVE NEGATIVE	BLACK WHITE		
SINGLE TRIAD		POSITIVE NEGATIVE THIRD WIRE	BLACK WHITE RED		
3) IDENTIFICATION OF CABLES SHALL INCLUDE CABLE NUMBER AND DESTINATION.					
4) SKID WIRING SHALL BE ARMORED BRAIDED CABLE PER MAYEKAWA REQUISITION					
5) DEVICES ARE EX(ia) RATED					
6) JUNCTION BOX IS EX(e) RATED AND MATERIAL IS SS 316					
7) MULTI CORE/PAIR CABLE GLANDS BY OTHERS.					
8) DUE TO SPACE LIMITATION, ALL CABLE ENTRIES ARE FROM BOTTOM					
KEY PLAN :					
01	20.10.24	ISSUED FOR APPROVAL	R.G	M.O	A.M.
00	07.09.24	ISSUED FOR APPROVAL	R.G	M.O	A.M.
REV.	ISSUE DATE	DESCRIPTION	PREPARED	CHECKED	APPROVED COMPANY
CLIENT:					
CONSULTING ENGINEER					
PROJECT:					
DRAWING TITLE:					
Local Panel and Junction Box Wiring Diagrams					
JBD-A-RU0001A-01					
DRAWING NO.			REV.	SIZE	SCALE
EI027-HSE-VD-IN-DIG-004			01	A3	N.T.S
					SHEET
					4 of 18



REFERENCE DRAWING			DWG NO.		REV.
LEGENDS :					
NOTES :					
1) INDIVIDUAL CONTROL WIRES SHALL BE IDENTIFIED BY TWO LABELS AT EACH END. THE FIRST LABEL (CLOSEST TO THE END OF THE WIRE) SHALL IDENTIFY THE NUMBER OF THE TERMINAL TO WHICH THE WIRE IS CONNECTED. THE OTHER LABEL SHALL IDENTIFY THE TERMINAL OF THE OPPOSITE END OF THE WIRE.					
2) AC SUPPLY		PHASE NEUTRAL GROUND	BLACK WHITE GREEN OR GREEN W/YELLOW TRACER		
DC SUPPLY		POSITIVE	RED OR RED SLEEVE OVER ANY COLOR EXCEPT GREEN		
		NEGATIVE	BLACK OR BLACK SLEEVE OVER ANY COLOR EXCEPT GREEN		
SIGNAL PAIR		POSITIVE NEGATIVE	BLACK WHITE		
SINGLE TRIAD		POSITIVE NEGATIVE THIRD WIRE	BLACK WHITE RED		
THERMOCPL		POSITIVE NEGATIVE	PER ANSI MC96.1 PER ANSI MC96.1		
3) IDENTIFICATION OF CABLES SHALL INCLUDE CABLE NUMBER AND DESTINATION.					
4) SKID WIRING SHALL BE ARMORED BRAIDED CABLE PER MAYEKAWA REQUISITION					
5) DEVICES ARE EX(ia) RATED					
6) JUNCTION BOX IS EX(e) RATED AND MATERIAL IS SS 316					
7) MULTI CORE/PAIR CABLE GLANDS BY OTHERS.					
8) DUE TO SPACE LIMITATION, ALL CABLE ENTRIES ARE FROM BOTTOM					
9) SEPARATION PLATE BETWEEN ANALOG, DIGITAL & POWER CABLES IS REQUIRED.					
KEY PLAN :					
01	20.10.24	ISSUED FOR APPROVAL	R.G	M.O	A.M.
00	07.09.24	ISSUED FOR APPROVAL	R.G	M.O	A.M.
REV.	ISSUE DATE	DESCRIPTION	PREPARED	CHECKED	APPROVED COMPANY
CLIENT:					
CONSULTING ENGINEER					
PROJECT:					
DRAWING TITLE:					
Local Panel and Junction Box Wiring Diagrams					
JBD-A-RU0001A-03					
DRAWING NO.			REV.	SIZE	SHEET
EI027-HSE-VD-IN-DIG-004			01	A3	6 of 18







REFERENCE DRAWING

DWG NO.

REV.

LEGENDS :

NOTES :

1) INDIVIDUAL CONTROL WIRES SHALL BE IDENTIFIED BY TWO LABELS AT EACH END. THE FIRST LABEL (CLOSEST TO THE END OF THE WIRE) SHALL IDENTIFY THE NUMBER OF THE TERMINAL TO WHICH THE WIRE IS CONNECTED. THE OTHER LABEL SHALL IDENTIFY THE TERMINAL OF THE OPPOSITE END OF THE WIRE.

2) AC SUPPLY PHASE NEUTRAL GROUND BLACK WHITE GREEN OR GREEN W/YELLOW TRACER

DC SUPPLY POSITIVE RED OR RED SLEEVE OVER ANY COLOR EXCEPT GREEN

NEGATIVE BLACK OR BLACK SLEEVE OVER ANY COLOR EXCEPT GREEN

SIGNAL PAIR POSITIVE NEGATIVE BLACK WHITE

SINGLE TRIAD POSITIVE NEGATIVE THIRD WIRE BLACK WHITE RED

THERMOCPL POSITIVE NEGATIVE PER ANSI MC96.1 PER ANSI MC96.1

3) IDENTIFICATION OF CABLES SHALL INCLUDE CABLE NUMBER AND DESTINATION.

4) SKID WIRING SHALL BE ARMORED BRAIDED CABLE PER MAYEKAWA REQUISITION

5) MULTI CORE/PAIR CABLE GLANDS BY OTHERS.

6) DUE TO SPACE LIMITATION, ALL CABLE ENTRIES ARE FROM BOTTOM

7) SEPARATION PLATE BETWEEN ANALOG, DIGITAL & POWER CABLES IS REQUIRED.

KEY PLAN :

0120.10.24ISSUED FOR APPROVALR.GM.OA.M.

0007.09.24ISSUED FOR APPROVALR.GM.OA.M.

REV.ISSUE DATEDESCRIPTIONPREPARED CHECKED APPROVED COMPANY

CLIENT:

CONSULTING ENGINEER

PROJECT:

DRAWING TITLE:

Local Panel and Junction Box Wiring Diagrams
OIL HTR

DRAWING NO.

REV.

SIZE

SCALE

SHEET

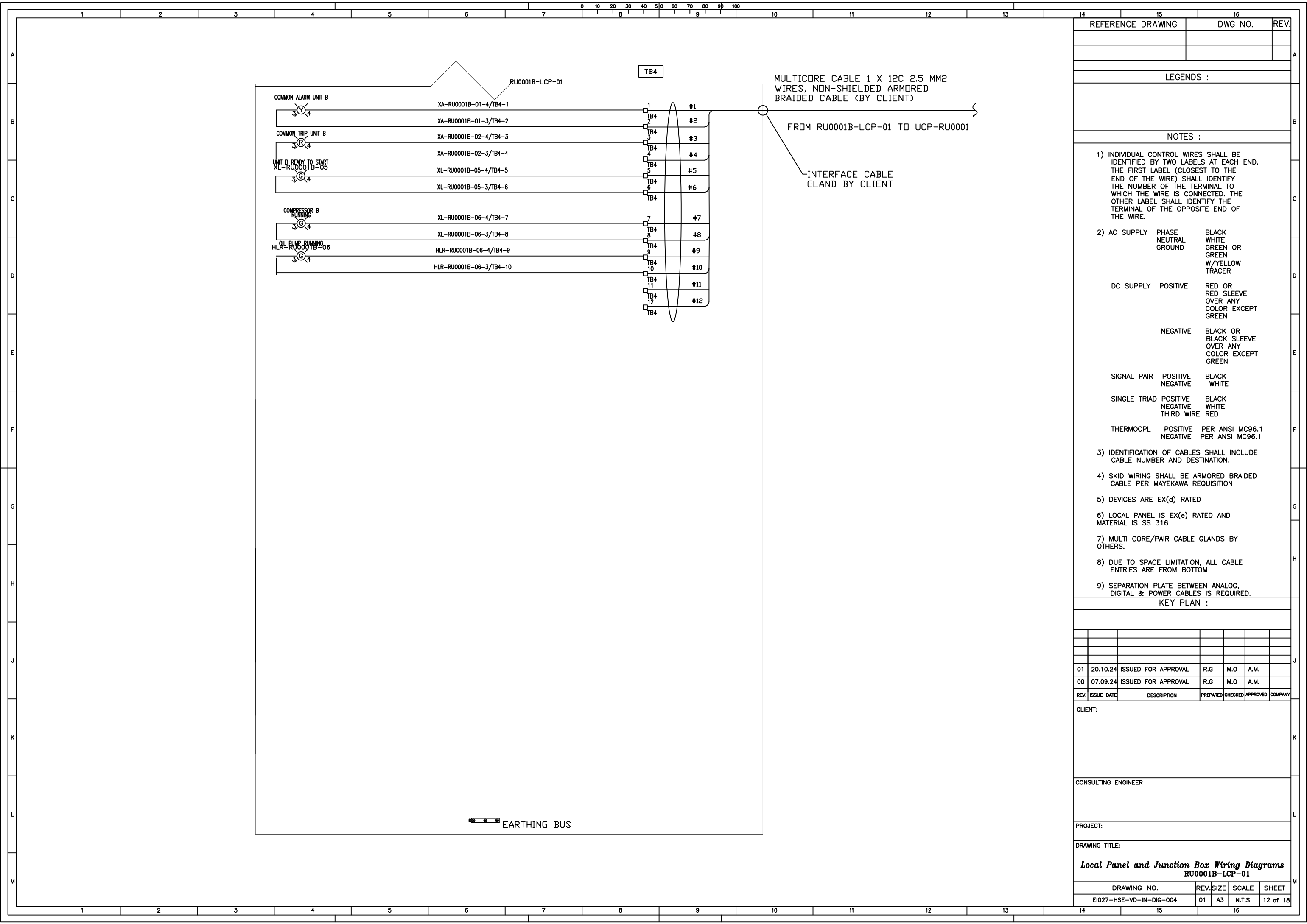
EI027-HSE-VD-IN-DIG-004

01

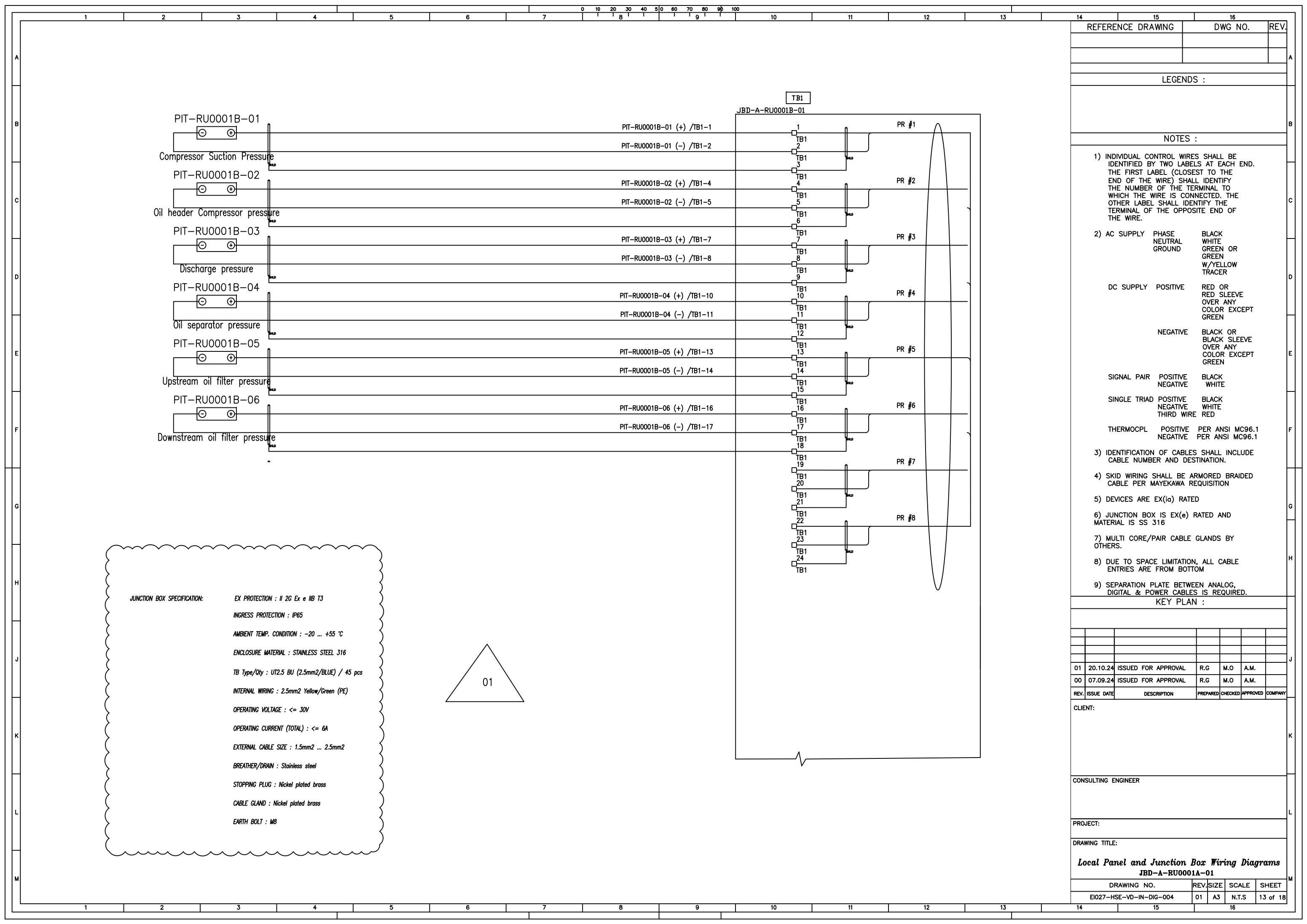
A3

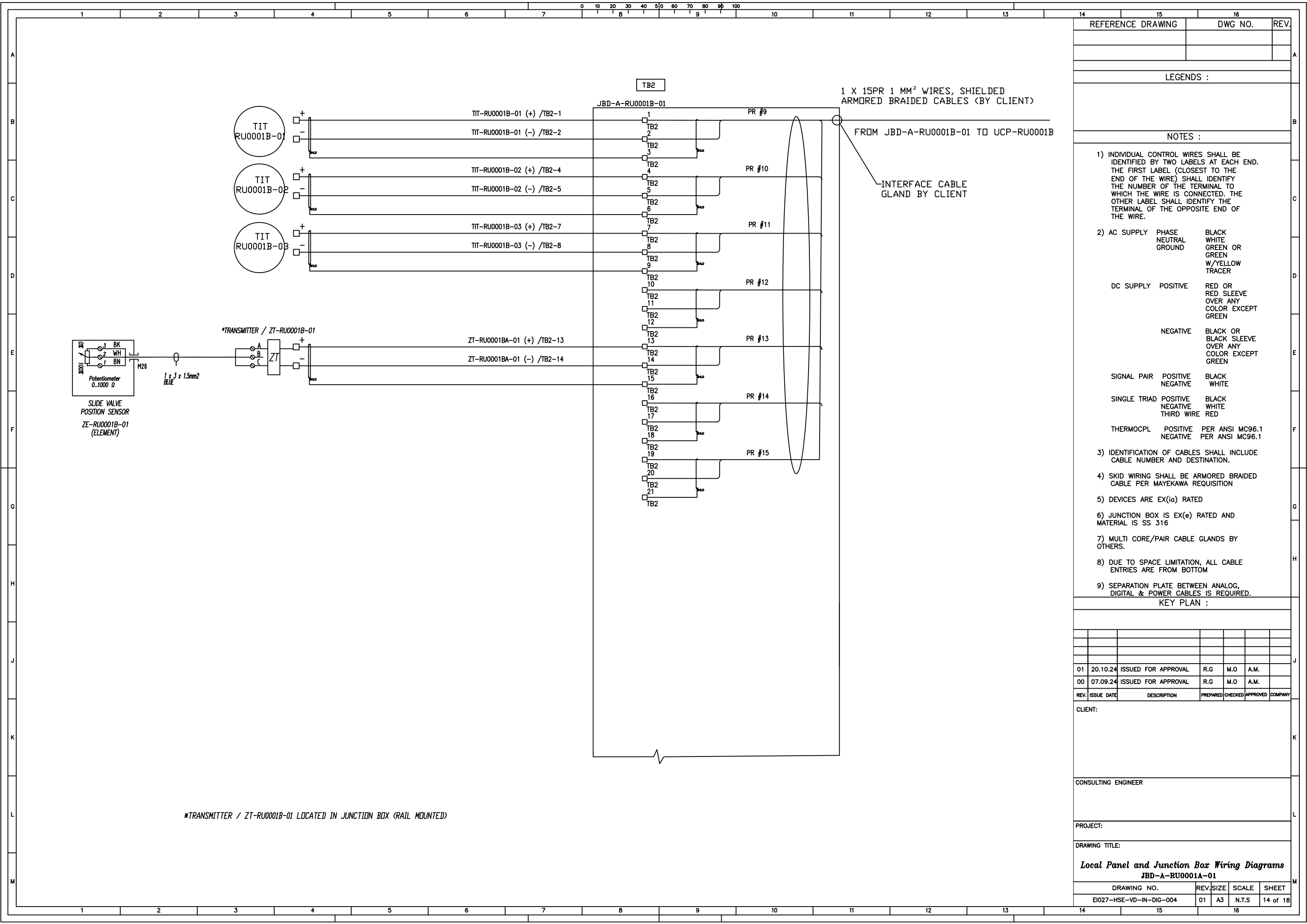
N.T.S

9 of 18

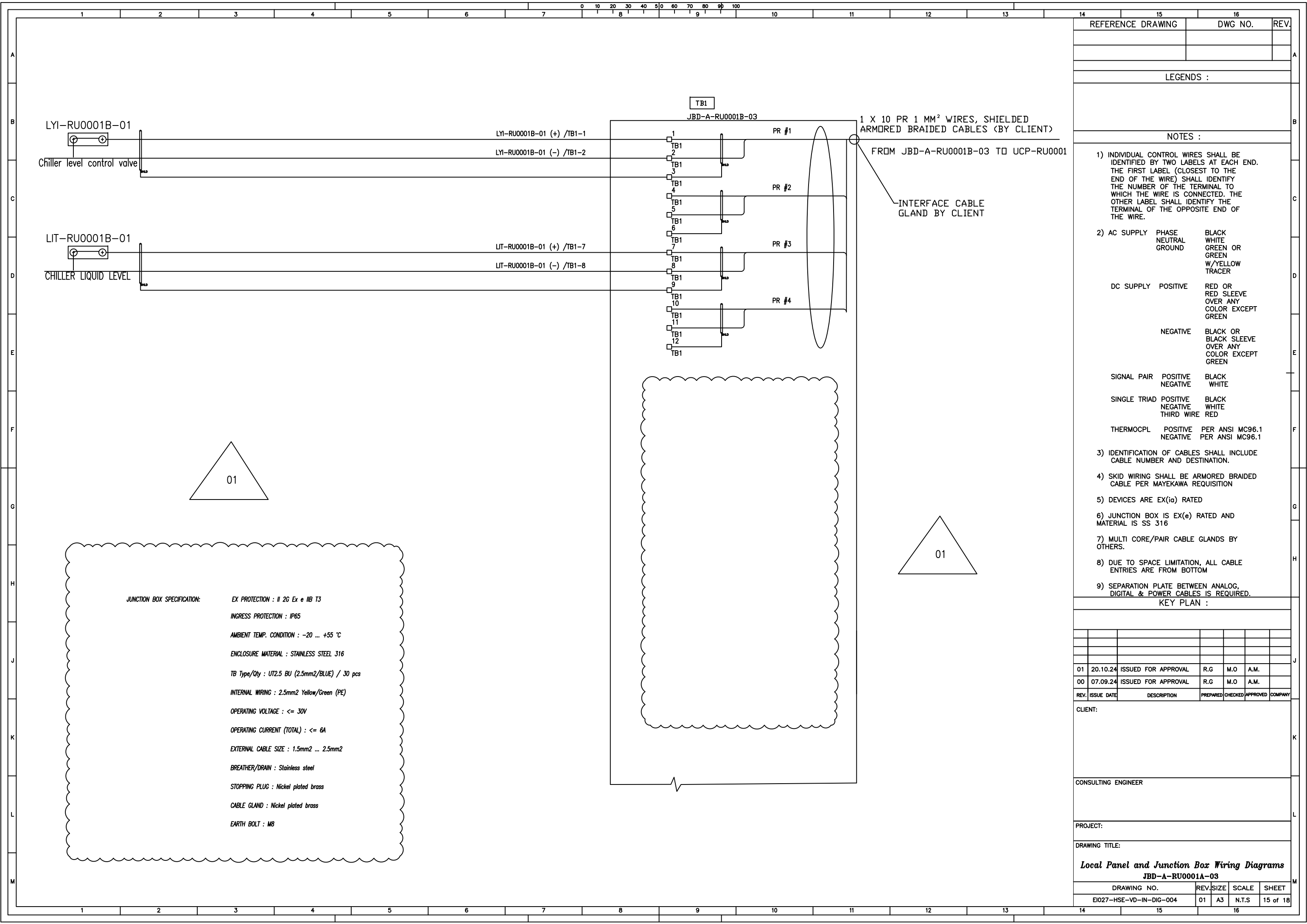


REFERENCE DRAWING			DWG NO.		REV.
LEGENDS :					
NOTES :					
1) INDIVIDUAL CONTROL WIRES SHALL BE IDENTIFIED BY TWO LABELS AT EACH END. THE FIRST LABEL (CLOSEST TO THE END OF THE WIRE) SHALL IDENTIFY THE NUMBER OF THE TERMINAL TO WHICH THE WIRE IS CONNECTED. THE OTHER LABEL SHALL IDENTIFY THE TERMINAL OF THE OPPOSITE END OF THE WIRE.					
2) AC SUPPLY PHASE BLACK NEUTRAL WHITE GROUND GREEN OR GREEN W/YELLOW TRACER					
DC SUPPLY POSITIVE RED OR RED SLEEVE OVER ANY COLOR EXCEPT GREEN					
NEGATIVE BLACK OR BLACK SLEEVE OVER ANY COLOR EXCEPT GREEN					
SIGNAL PAIR POSITIVE BLACK NEGATIVE WHITE					
SINGLE TRIAD POSITIVE BLACK NEGATIVE WHITE THIRD WIRE RED					
THERMOCPL POSITIVE PER ANSI MC96.1 NEGATIVE PER ANSI MC96.1					
3) IDENTIFICATION OF CABLES SHALL INCLUDE CABLE NUMBER AND DESTINATION.					
4) SKID WIRING SHALL BE ARMORED BRAIDED CABLE PER MAYEKAWA REQUISITION					
5) DEVICES ARE EX(d) RATED					
6) LOCAL PANEL IS EX(e) RATED AND MATERIAL IS SS 316					
7) MULTI CORE/PAIR CABLE GLANDS BY OTHERS.					
8) DUE TO SPACE LIMITATION, ALL CABLE ENTRIES ARE FROM BOTTOM					
9) SEPARATION PLATE BETWEEN ANALOG, DIGITAL & POWER CABLES IS REQUIRED.					
KEY PLAN :					
01	20.10.24	ISSUED FOR APPROVAL	R.G	M.O	A.M.
00	07.09.24	ISSUED FOR APPROVAL	R.G	M.O	A.M.
REV.	ISSUE DATE	DESCRIPTION	PREPARED	CHECKED	APPROVED
COMPANY					
CLIENT:					
CONSULTING ENGINEER					
PROJECT:					
DRAWING TITLE:					
Local Panel and Junction Box Wiring Diagrams					
RU0001B-LCP-01					
DRAWING NO.			REV.	SIZE	SCALE
EI027-HSE-VD-IN-DIG-004			01	A3	N.T.S
			SHEET		
			12 of 18		

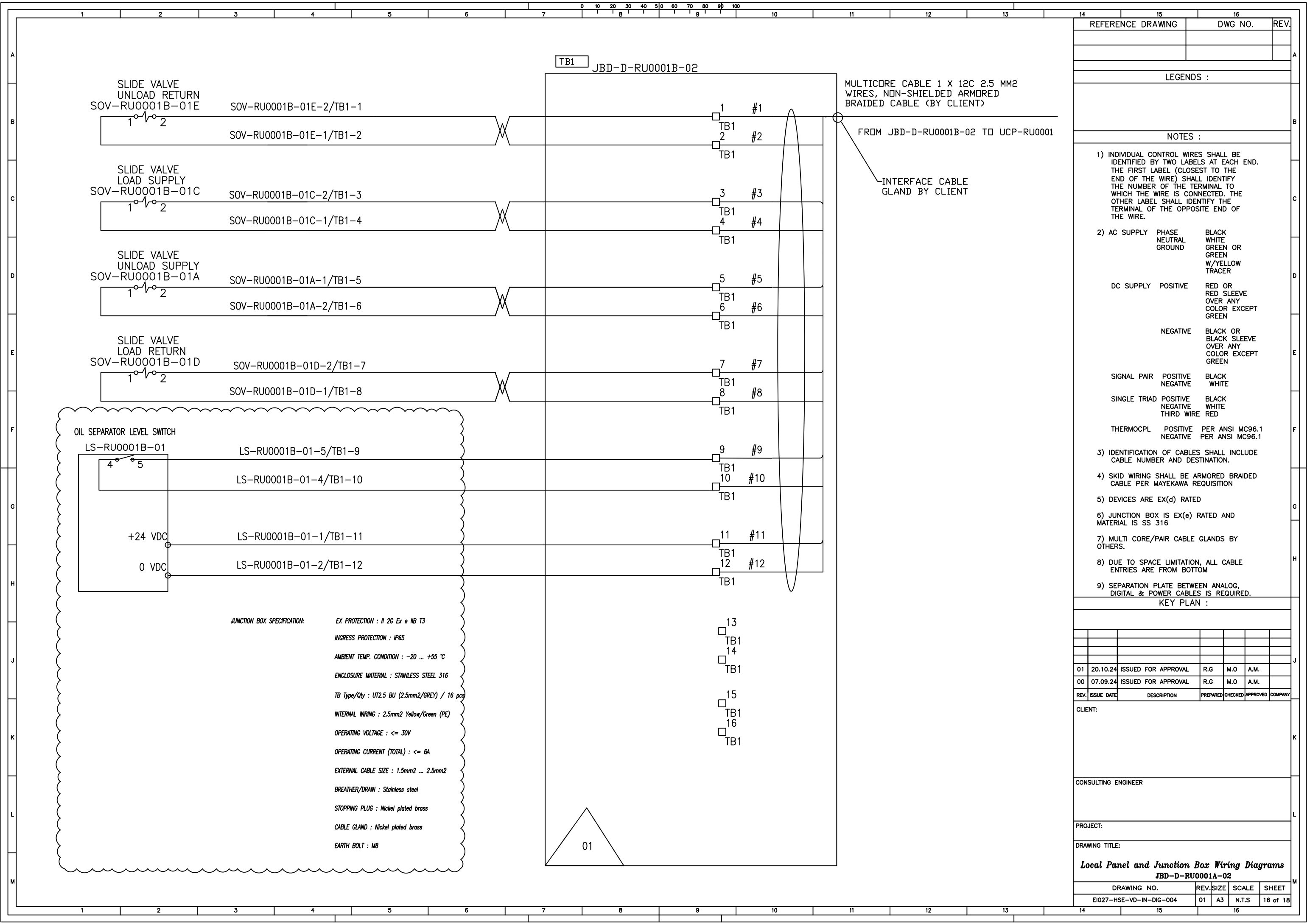


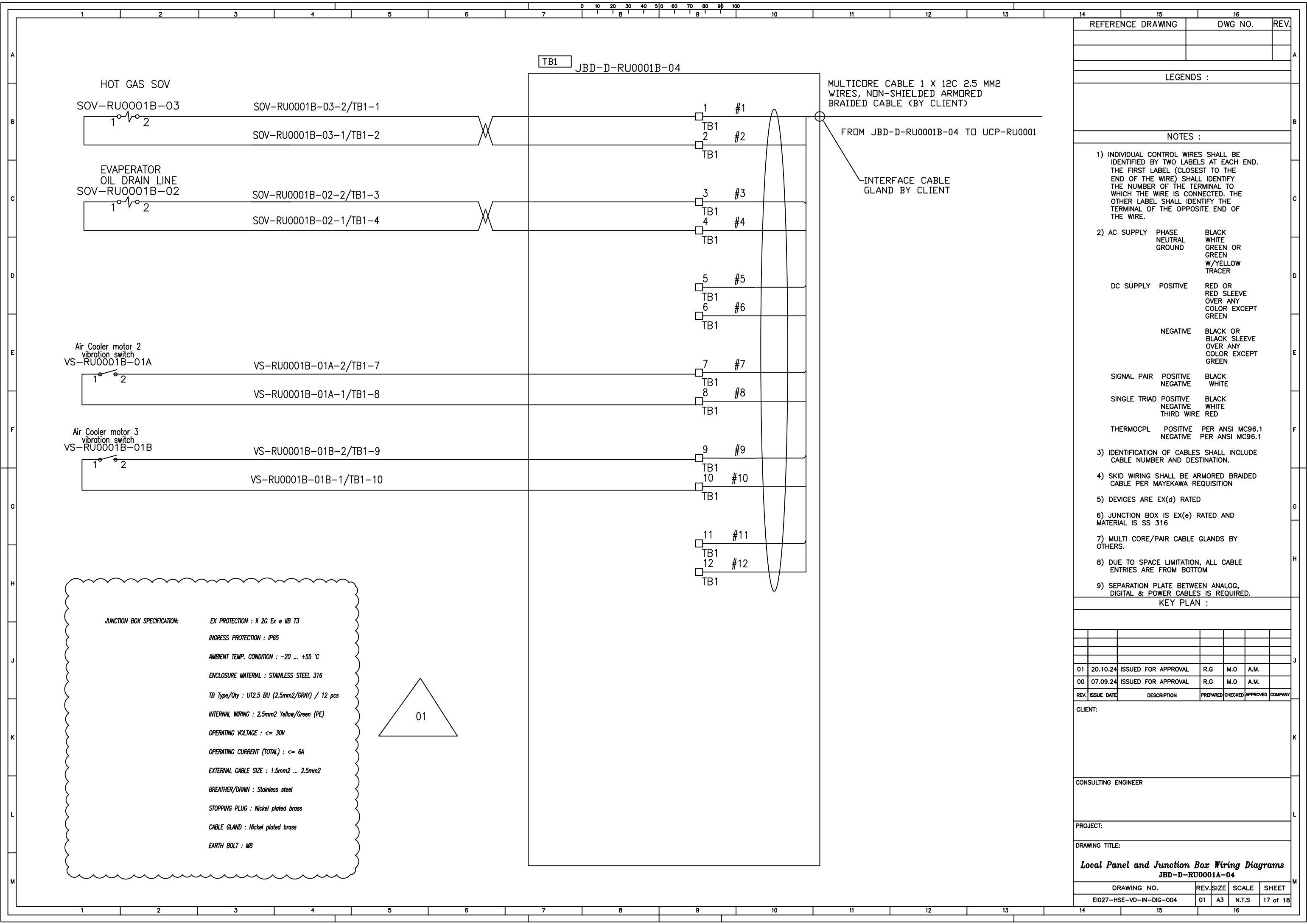


REFERENCE DRAWING			DWG NO.			REV.
LEGENDS :						
NOTES :						
1) INDIVIDUAL CONTROL WIRES SHALL BE IDENTIFIED BY TWO LABELS AT EACH END. THE FIRST LABEL (CLOSEST TO THE END OF THE WIRE) SHALL IDENTIFY THE NUMBER OF THE TERMINAL TO WHICH THE WIRE IS CONNECTED. THE OTHER LABEL SHALL IDENTIFY THE TERMINAL OF THE OPPOSITE END OF THE WIRE.						
2) AC SUPPLY PHASE BLACK NEUTRAL WHITE GROUND GREEN OR GREEN W/YELLOW TRACER						
DC SUPPLY POSITIVE RED OR RED SLEEVE OVER ANY COLOR EXCEPT GREEN						
NEGATIVE BLACK OR BLACK SLEEVE OVER ANY COLOR EXCEPT GREEN						
SIGNAL PAIR POSITIVE BLACK NEGATIVE WHITE						
SINGLE TRIAD POSITIVE BLACK NEGATIVE WHITE THIRD WIRE RED						
THERMOCPL POSITIVE PER ANSI MC96.1 NEGATIVE PER ANSI MC96.1						
3) IDENTIFICATION OF CABLES SHALL INCLUDE CABLE NUMBER AND DESTINATION.						
4) SKID WIRING SHALL BE ARMORED BRAIDED CABLE PER MAYEKAWA REQUISITION						
5) DEVICES ARE EX(ia) RATED						
6) JUNCTION BOX IS EX(e) RATED AND MATERIAL IS SS 316						
7) MULTI CORE/PAIR CABLE GLANDS BY OTHERS.						
8) DUE TO SPACE LIMITATION, ALL CABLE ENTRIES ARE FROM BOTTOM						
9) SEPARATION PLATE BETWEEN ANALOG, DIGITAL & POWER CABLES IS REQUIRED.						
KEY PLAN :						
01	20.10.24	ISSUED FOR APPROVAL	R.G	M.O	A.M.	
00	07.09.24	ISSUED FOR APPROVAL	R.G	M.O	A.M.	
REV.	ISSUE DATE	DESCRIPTION	PREPARED	CHECKED	APPROVED	COMPANY
CLIENT:						
CONSULTING ENGINEER						
PROJECT:						
DRAWING TITLE:						
Local Panel and Junction Box Wiring Diagrams						
JBD-A-RU0001A-01						
DRAWING NO.			REV.	SIZE	SCALE	SHEET
EI027-HSE-VD-IN-DIG-004			01	A3	N.T.S	14 of 18

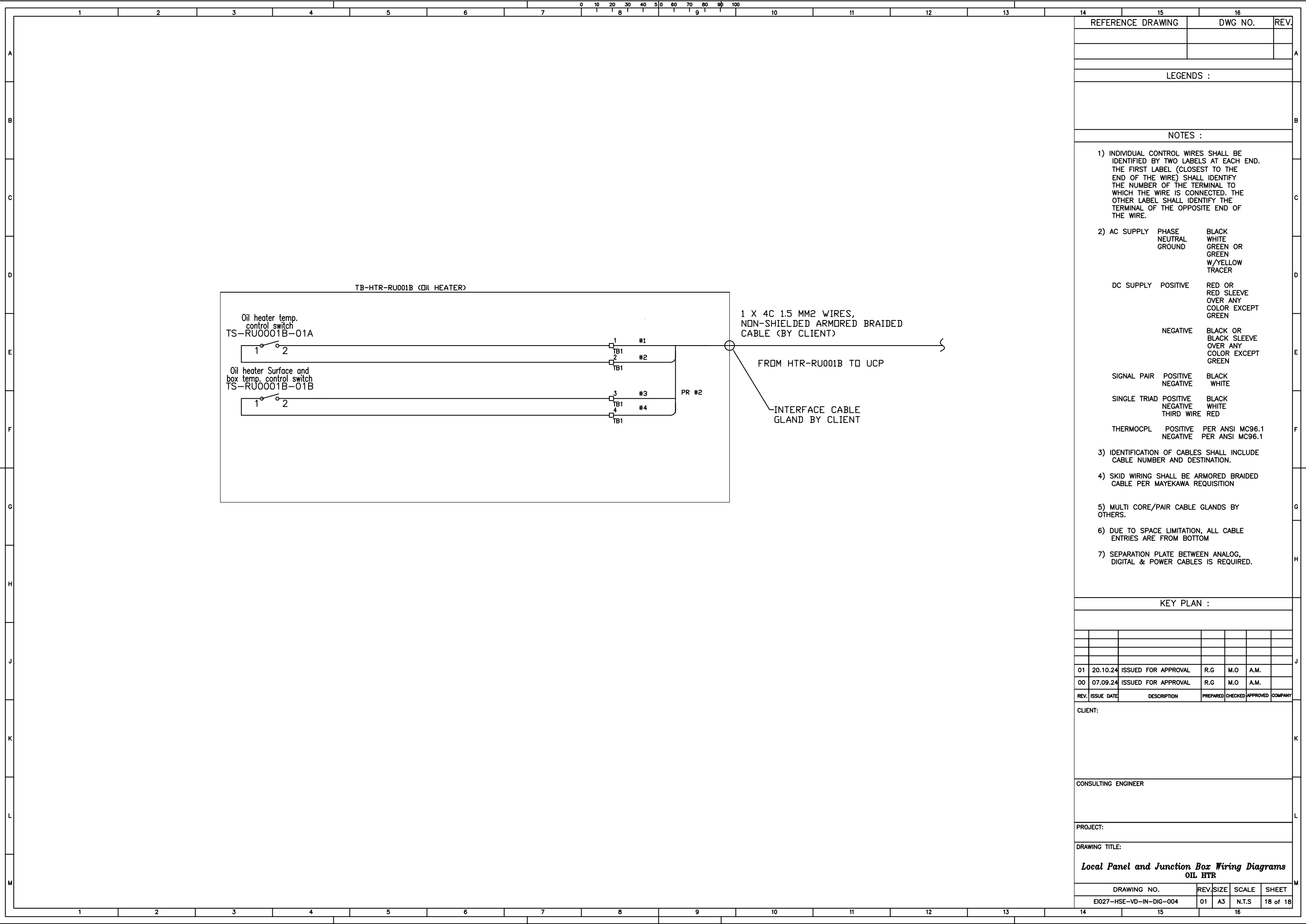


REFERENCE DRAWING			DWG NO.		REV.
LEGENDS :					
NOTES :					
1) INDIVIDUAL CONTROL WIRES SHALL BE IDENTIFIED BY TWO LABELS AT EACH END. THE FIRST LABEL (CLOSEST TO THE END OF THE WIRE) SHALL IDENTIFY THE NUMBER OF THE TERMINAL TO WHICH THE WIRE IS CONNECTED. THE OTHER LABEL SHALL IDENTIFY THE TERMINAL OF THE OPPOSITE END OF THE WIRE.					
2) AC SUPPLY		PHASE NEUTRAL GROUND	BLACK WHITE GREEN OR GREEN W/YELLOW TRACER		
DC SUPPLY		POSITIVE	RED OR RED SLEEVE OVER ANY COLOR EXCEPT GREEN		
		NEGATIVE	BLACK OR BLACK SLEEVE OVER ANY COLOR EXCEPT GREEN		
SIGNAL PAIR		POSITIVE NEGATIVE	BLACK WHITE		
SINGLE TRIAD		POSITIVE NEGATIVE THIRD WIRE	BLACK WHITE RED		
THERMOCPL		POSITIVE NEGATIVE	PER ANSI MC96.1 PER ANSI MC96.1		
3) IDENTIFICATION OF CABLES SHALL INCLUDE CABLE NUMBER AND DESTINATION.					
4) SKID WIRING SHALL BE ARMORED BRAIDED CABLE PER MAYEKAWA REQUISITION					
5) DEVICES ARE EX(ia) RATED					
6) JUNCTION BOX IS EX(e) RATED AND MATERIAL IS SS 316					
7) MULTI CORE/PAIR CABLE GLANDS BY OTHERS.					
8) DUE TO SPACE LIMITATION, ALL CABLE ENTRIES ARE FROM BOTTOM					
9) SEPARATION PLATE BETWEEN ANALOG, DIGITAL & POWER CABLES IS REQUIRED.					
KEY PLAN :					
01	20.10.24	ISSUED FOR APPROVAL	R.G	M.O	A.M.
00	07.09.24	ISSUED FOR APPROVAL	R.G	M.O	A.M.
REV.	ISSUE DATE	DESCRIPTION	PREPARED	CHECKED	APPROVED COMPANY
CLIENT:					
CONSULTING ENGINEER					
PROJECT:					
DRAWING TITLE:					
Local Panel and Junction Box Wiring Diagrams					
JBD-A-RU0001A-03					
DRAWING NO.			REV.	SIZE	SCALE SHEET
EI027-HSE-VD-IN-DIG-004			01	A3	N.T.S 15 of 18





14		15		16	
REFERENCE DRAWING			DWG NO.		REV.
LEGENDS :					
NOTES :					
1) INDIVIDUAL CONTROL WIRES SHALL BE IDENTIFIED BY TWO LABELS AT EACH END. THE FIRST LABEL (CLOSEST TO THE END OF THE WIRE) SHALL IDENTIFY THE NUMBER OF THE TERMINAL TO WHICH THE WIRE IS CONNECTED. THE OTHER LABEL SHALL IDENTIFY THE TERMINAL OF THE OPPOSITE END OF THE WIRE.					
2) AC SUPPLY		PHASE NEUTRAL GROUND	BLACK WHITE GREEN OR GREEN W/YELLOW TRACER		
DC SUPPLY		POSITIVE	RED OR RED SLEEVE OVER ANY COLOR EXCEPT GREEN		
		NEGATIVE	BLACK OR BLACK SLEEVE OVER ANY COLOR EXCEPT GREEN		
SIGNAL PAIR		POSITIVE NEGATIVE	BLACK WHITE		
SINGLE TRIAD		POSITIVE NEGATIVE THIRD WIRE	BLACK WHITE RED		
THERMOCPL		POSITIVE NEGATIVE	PER ANSI MC96.1 PER ANSI MC96.1		
3) IDENTIFICATION OF CABLES SHALL INCLUDE CABLE NUMBER AND DESTINATION.					
4) SKID WIRING SHALL BE ARMORED BRAIDED CABLE PER MAYEKAWA REQUISITION					
5) DEVICES ARE EX(d) RATED					
6) JUNCTION BOX IS EX(e) RATED AND MATERIAL IS SS 316					
7) MULTI CORE/PAIR CABLE GLANDS BY OTHERS.					
8) DUE TO SPACE LIMITATION, ALL CABLE ENTRIES ARE FROM BOTTOM					
9) SEPARATION PLATE BETWEEN ANALOG, DIGITAL & POWER CABLES IS REQUIRED.					
KEY PLAN :					
01	20.10.24	ISSUED FOR APPROVAL	R.G	M.O	A.M.
00	07.09.24	ISSUED FOR APPROVAL	R.G	M.O	A.M.
REV.	ISSUE DATE	DESCRIPTION	PREPARED	CHECKED	APPROVED COMPANY
CLIENT:					
CONSULTING ENGINEER					
PROJECT:					
DRAWING TITLE:					
Local Panel and Junction Box Wiring Diagrams JBD-D-RU0001A-04					
DRAWING NO.			REV.	SIZE	SCALE SHEET
EI027-HSE-VD-IN-DIG-004			01	A3	N.T.S 17 of 18
14		15		16	



REFERENCE DRAWING

DWG NO.

REV.

LEGENDS :

NOTES :

1) INDIVIDUAL CONTROL WIRES SHALL BE IDENTIFIED BY TWO LABELS AT EACH END. THE FIRST LABEL (CLOSEST TO THE END OF THE WIRE) SHALL IDENTIFY THE NUMBER OF THE TERMINAL TO WHICH THE WIRE IS CONNECTED. THE OTHER LABEL SHALL IDENTIFY THE TERMINAL OF THE OPPOSITE END OF THE WIRE.

2) AC SUPPLY PHASE NEUTRAL GROUND BLACK WHITE GREEN OR GREEN W/YELLOW TRACER

DC SUPPLY POSITIVE RED OR RED SLEEVE OVER ANY COLOR EXCEPT GREEN

NEGATIVE BLACK OR BLACK SLEEVE OVER ANY COLOR EXCEPT GREEN

SIGNAL PAIR POSITIVE NEGATIVE BLACK WHITE

SINGLE TRIAD POSITIVE NEGATIVE THIRD WIRE BLACK WHITE RED

THERMOCPL POSITIVE NEGATIVE PER ANSI MC96.1 PER ANSI MC96.1

3) IDENTIFICATION OF CABLES SHALL INCLUDE CABLE NUMBER AND DESTINATION.

4) SKID WIRING SHALL BE ARMORED BRAIDED CABLE PER MAYEKAWA REQUISITION

5) MULTI CORE/PAIR CABLE GLANDS BY OTHERS.

6) DUE TO SPACE LIMITATION, ALL CABLE ENTRIES ARE FROM BOTTOM

7) SEPARATION PLATE BETWEEN ANALOG, DIGITAL & POWER CABLES IS REQUIRED.

KEY PLAN :

0120.10.24ISSUED FOR APPROVALR.GM.OA.M.

0007.09.24ISSUED FOR APPROVALR.GM.OA.M.

REV.ISSUE DATEDESCRIPTIONPREPARED CHECKED APPROVED COMPANY

CLIENT:

CONSULTING ENGINEER

PROJECT:

DRAWING TITLE:

Local Panel and Junction Box Wiring Diagrams
OIL HTR

DRAWING NO.

REV.

SIZE

SCALE

SHEET

EI027-HSE-VD-IN-DIG-004

01

A3

N.T.S

18 of 18